

# ADJUSTABLE ECCENTRIC MULTIPLE SPINDLE HEADS



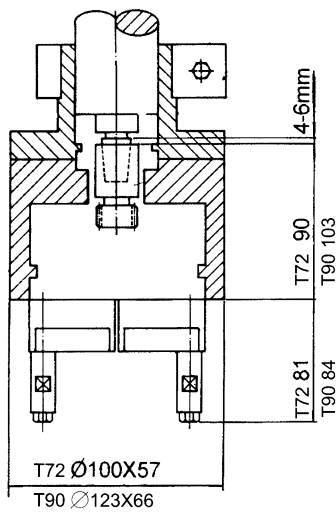
T-72  
T-90

T-108  
T-121

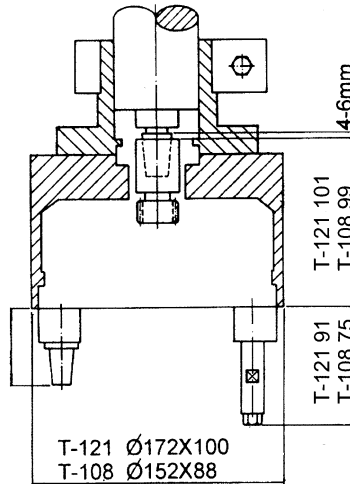
T-214  
T-226  
T-240  
FLOATING ADAPTER TYPE  
Patent No. 79022

T-359

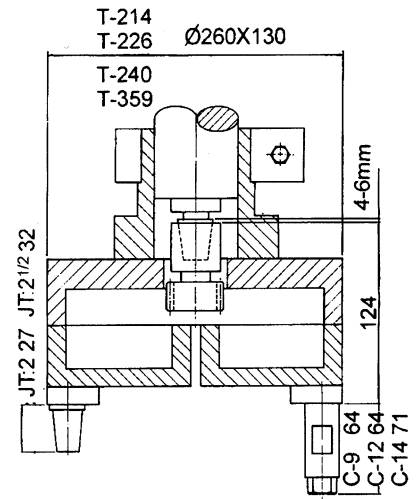
(Unit: inch)



T-72, T-90



T-108, T-121



T-214, T-226, T-240, T-359

## Specifications (Unit: inch)

Model	T-72	T-90	T-108	T-121	T-214	T-226	T-240	T-359
Max. Distance Between Spindles	2-13/16"	3-1/2"	4-1/4"	4-3/4"	8-27/64"	8-7/8"	9-27/64"	14-1/8"
Min. Spindle Diameter	1/2"	5/8"	23/32"	31/32"	1-7/8"	1-3/8"	2-3/8"	2-1/4"
Min. Pitch Diameter	-	-	-	-	-	-	-	-
Min. Distance Between Spindles	1/2"	5/8"	23/32"	31/32"	1-7/8"	1-3/8"	2-3/8"	2-1/4"
Ratio of Input/Output RPM	1:1	1:1	1:1	1:1	1:1	1:1	1:1	1:1
Max. Drilling Capacity in Mild Steel (inch)	Ø5/32	Ø3/16	Ø15/64	Ø5/16	Ø27/64	Ø11/32	Ø29/32	Ø11/32
Max. Tapping Capacity in Mild Steel (inch)	5/32	3/16	15/64	5/16	7/16	5/16	7/8	5/16
Number of Spindles	2	2	2	2	2	2	2	2



**D-170**



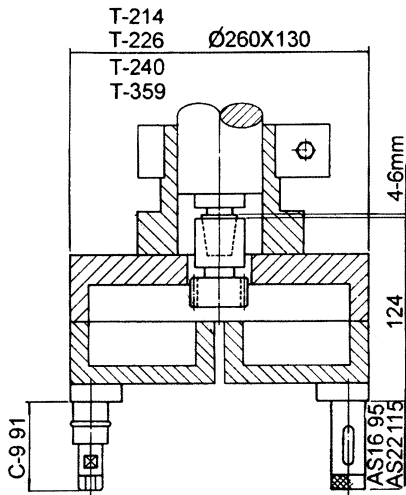
**D-177  
D-198  
D-240**



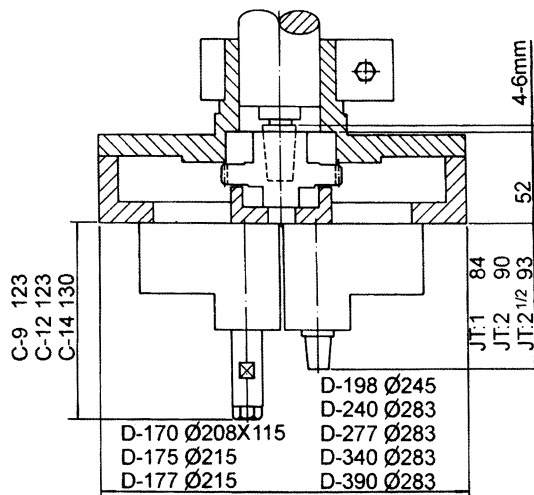
**D-175-3 SPINDLE  
D-240-3 SPINDLE**



**D-340  
D-390**



**T-214, T-226, T-240, T-359**



**D TYPE**

D-170	D-175	D-177	D-198	D-240	D-277	D-340	D-390
6-5/8"	6-5/8"	6-15/16"	7-3/4"	9-3/8"	10-7/8"	13-3/8"	15-5/16"
1-1/2"	1-3/4"	2-1/4"	4-7/16"	-	-	-	-
-	-	-	-	3-3/4"	3-15/16"	8-1/4"	9-11/16"
1-1/2"	1-1/2"	1-1/2"	1-3/4"	2-1/4"	1-1/2"	2-1/4"	2-1/4"
1:2.7	1:2.7	1:3	1:2.9	1:3.3	1:5.1	1:3.3	1:3.3
Ø1/2	Ø1/2	Ø3/8	Ø1/2	Ø1/2	Ø1/4	Ø1/2	Ø1/2
1/2	1/2	3/8	1/2	1/2	1/4	1/2	1/2
2	3	4	4	3-4	6	4	4

## Features

- Eccentric and adjustable heads
- Gear and universal joint drives available
- Fixed center custom built heads available
- Adaptable to most drilling units, drill and tap presses, and CNC machines
- Variety of spindles including collets, Jacob's tapers, and adjustable adapters
- Floating spindle adapters available
- Up to 6000 RPM spindle speed available