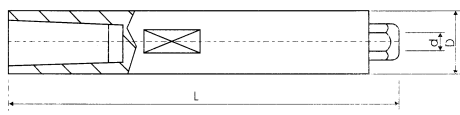
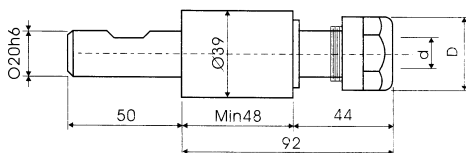


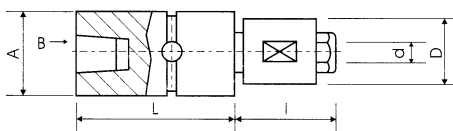
SPINDLE AND COLLET SPECIFICATIONS



Extension bar (Length can be specified)



Floating spindle adapter
(for tapping and reaming applications)
Patent No.: 79022



Floating spindle adapter
(for tapping and reaming applications)
Patent No.: 79022

Specifications (Unit: m/m)

Size/Type	L	B	D	d	Remarks*
JC-9	85	JT6	Ø24	Ø3-Ø8	
JC-12	85	JT6	Ø24	Ø6-Ø11	
JC-14	92	JT6	Ø30	Ø8-Ø13	
JC-16	115	JT3	Ø42	Ø10-Ø16	
JC-20	125	JT4	Ø44	Ø13-Ø18	
JC-30	131	JT4	Ø58	Ø16-Ø28	
			Ø10	Ø1.1-Ø4	

*AS (automotive styles) also available in certain models.

ER20

D Max. Shank Diameter

Ø32 Ø13

Specifications (Unit: m/m)

Size/Type	A	B	L	I	D	d	Remarks*
FCJ-5	Ø30	JT2S-JT6	65	46	Ø12	Ø2-Ø5.5	
FCJ-6	Ø30	JT2S-JT6	65	50	Ø17	Ø2-Ø6	
FCJ-9	Ø30	JT2S-JT6	65	66	Ø19	Ø3-Ø8	
FCJ-9	Ø34	JT6	72	37	Ø26	Ø3-Ø8	
FCJ-9	Ø34	M17xP1.0+JT2S	77	37	Ø26	Ø3-Ø8	
FCJ-9	Ø34	M20xP1.0+JT6	78	37	Ø26	Ø3-Ø8	
FCJ-12	Ø34	JT6	72	37	Ø26	Ø6-Ø11	
FCJ-12	Ø34	M17xP1.0+JT2S	77	37	Ø26	Ø6-Ø11	
FCJ-12	Ø34	M20xP1.0+JT6	78	37	Ø26	Ø6-Ø11	
FCJ-14	Ø34	JT6	72	68	Ø30	Ø8-Ø13	
FCJ-14	Ø34	M17xP1.0+JT2S	77	68	Ø30	Ø8-Ø13	
FCJ-14	Ø34	M20xP1.0+JT6	78	68	Ø30	Ø8-Ø13	
FCJ-16	Ø58	JT3	98	43	Ø44	Ø10-Ø16	
FCJ-16	Ø58	JT4	110	43	Ø44	Ø10-Ø16	
FCJ-20	Ø58	JT3	98	46	Ø44	Ø13-Ø18	
FCJ-20	Ø58	JT4	110	47	Ø44	Ø13-Ø18	
FCJ-30	Ø58	JT4	110	48	Ø58	Ø16-Ø28	

Specifications (Unit: m/m)

Size/Type	A	B	C	D	d	E	F ^{-0.020 -0.025}	G	H	L	Q	K	Remarks*
D-4	6	1/4-28UNF	8.5	Ø8	Ø1.5-Ø4.0	5	Ø6.5	4	13	24	12°	4	
C-5	8	5/16-24UNF	9	Ø10.8	Ø1.5-Ø5.0	6	Ø8.5	5	19	31	14°	5	
C-6	10	3/8-27UNF	12	Ø13.2	Ø1.5-Ø6.0	7	Ø10	6	23	36	15°	6.5	
C-9	14	1/2-20UNF	15	Ø17	Ø3.0-Ø8.0	9	Ø13	7	29	47	15°	8	
C-12	17	5/8-18UNF	15	Ø21.2	Ø5.0-Ø11	10	Ø16.5	7	31	48	15°	9	
C-14	21	3/4-16UNF	15	Ø24.6	Ø6.0-Ø13	11	Ø20	8	34	53	15°	10	
C-16	26	M24 x P2.0	18	Ø31	Ø10-Ø18	15	Ø25	11	44	70	15°	12	
C-20	29	M27 x P2.0	19	Ø34.1	Ø14-Ø20	22	Ø28	11	44	71	15°	13	
C-30	38	M38 x P2.0	22	Ø45.7	Ø17-Ø30	25	Ø39	12	50	81	15°	16	

Order Formula:
Type x Shank Diameter x Quantity
Ex: CT-9 x Ø8mm x 4pcs

C For drill
CT For tap

*Remarks: Please specify if you are using for the following tools: reamer, end mill, chamfering tool, high pitch drill, left turn tap.

