



These high-precision indexers are perfect for most trunnion and carousel type machines. Their heavy load capacity and “non-lifting” tabletop make them even more enticing. The interlocking three-piece gear increases the accuracy of these tables the longer they are used. Hydraulic power packs are available for operating these indexers. Electrical versions are also available (including servo controlled).

Features

- Hirth Coupled with ± 5 arc sec repeatability
- Heavy Duty - carries large, heavy fixtures
- Hydraulic Powered†
- “Non-lifting” dial plate
- Less than .0004” table run out
- Electric powered version available
- Tailstocks are available

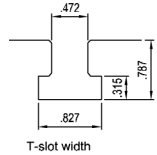
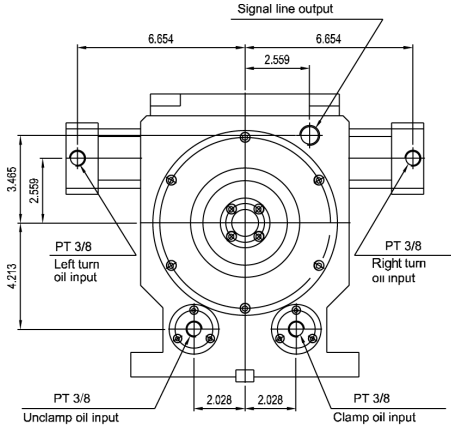
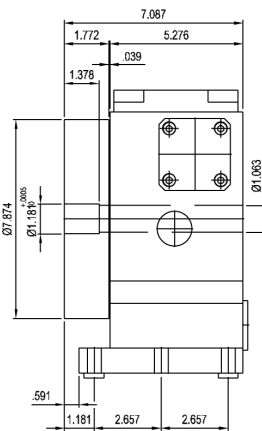
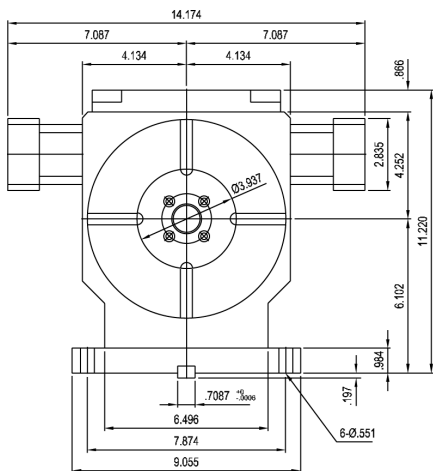
Specifications (Unit: inch)

Model		CT-200V	CT-250V	CT-320V	CT-470W
Plate Diameter	(inch)	7.874	9.843	12.598	18.504
Center Hole Diameter	(inch)	1.181 ^{+0.0005} ₀	2.165 ^{+0.0007} ₀	2.559 ^{+0.0007} ₀	3.543 ^{+0.0009} ₀
Spindle Hole Diameter	(inch)	1.062	1.181	1.220	N/A
Table Center Height (Ver. Pos.)	(inch)	6.102	8.267	9.055	N/A
Overall Height (Ver. Pos.)	(inch)	11.220	14.251	15.354	N/A
Width of T-Slot	(inch)	0.472 ^{+0.0008} ₀	0.472 ^{+0.0008} ₀	0.551 ^{+0.0008} ₀	N/A
Width of Key	(inch)	0.708 ⁰ _{-0.0004}	0.708 ⁰ _{-0.0004}	0.708 ⁰ _{-0.0004}	N/A
Index Numbers		4, 6, 8, 12, 24			
Index Accuracy*	(arc sec)	± 5	± 5	± 5	± 5
Table Running Direction		clockwise and counterclockwise			
Rotary Torque	(lb ft)	159	268	434	579
Working Pressure	(psi)	430	430	430	430
Clamping Force	(lb)	2646	3042	3439	8752
Permissible Loading	(lb)	209	331	441	1543
Permissible Instant Inertia GD ²	(lb ft ²)	451	1187	2017	4218
Weight	(lb)	117	220	320	55

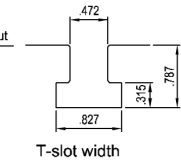
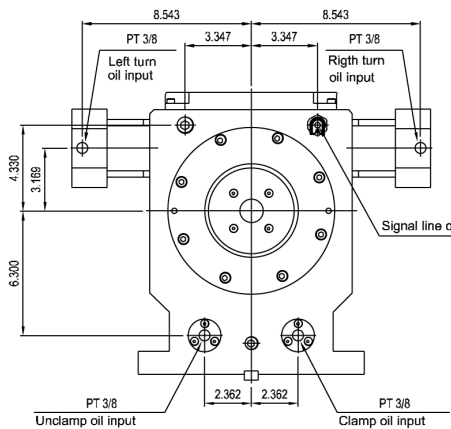
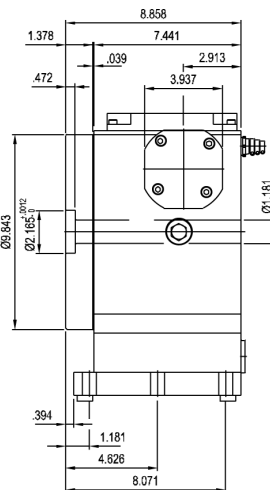
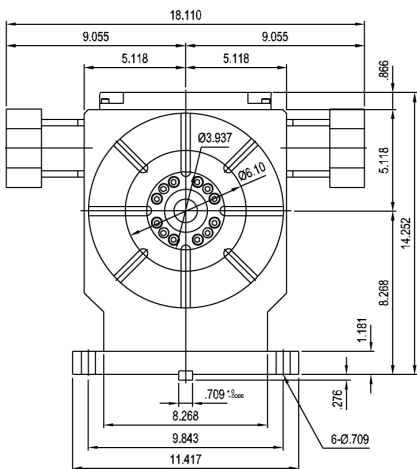
† For hydraulic circuit drawing refer to page 7.

* For indexing accuracy in inches per arc sec, refer to page 3.

DIAGRAM OF EXTERNAL SIZE (VERTICAL)



CT-200V
(Unit: inch)



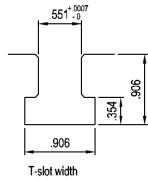
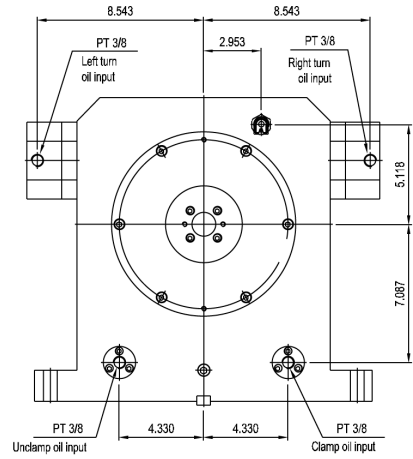
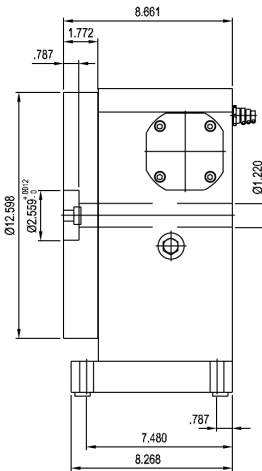
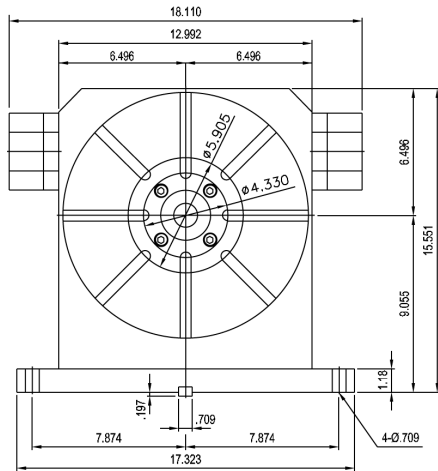
CT-250V
(Unit: inch)

Inspection Value (Unit: inch)

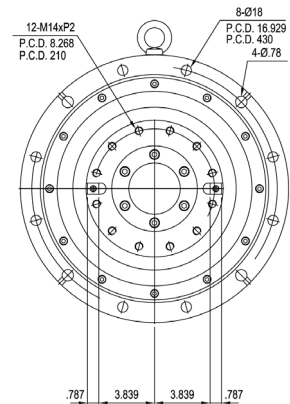
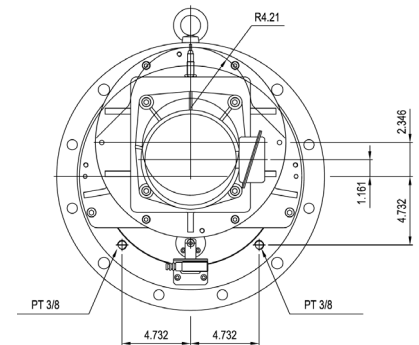
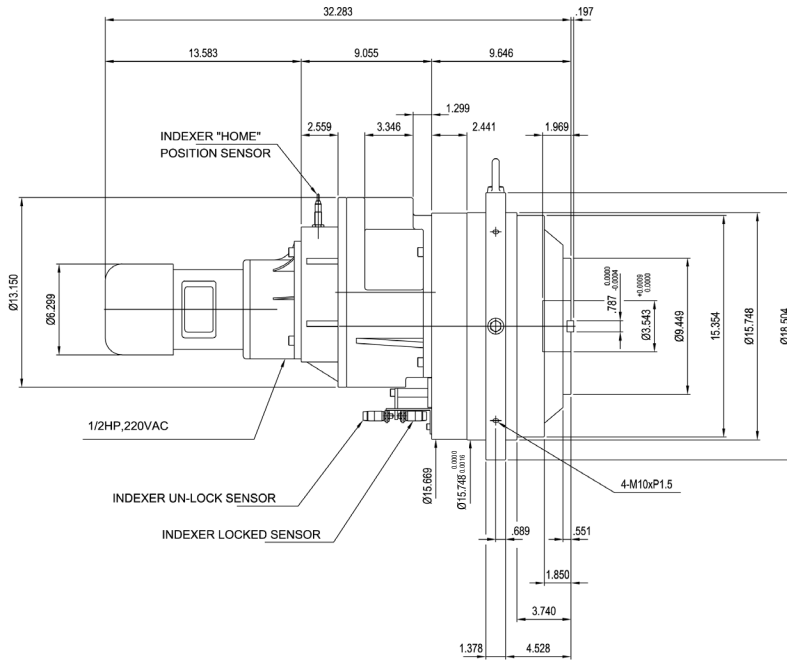
Inspection Item	CT-200V	CT-250V	CT-320V	CT-470W
Table Surface Straightness	0.0006	0.0006	0.0006	0.0008
Table Surface Run Out	0.0004	0.0004	0.0004	0.0008
Parallelism Between Plate and Bottom Surface	0.0008	0.0008	0.0008	0.0008
Index Accuracy (arc sec)*	± 5	± 5	± 5	± 5
Spindle Hole Run Out Tolerance	0.0004	0.0004	0.0004	N/A
Squareness Between Plate and Bottom Surface	0.0008	0.0008	0.0008	N/A
Squareness Between Plate and Bottom Anchor Center Line	0.0008	0.0008	0.0008	N/A
Parallelism Between Plate, Tailstock Center Line and Bottom Anchor	0.0008	0.0008	0.0008	N/A
Tolerance Between Plate and Tailstock Center Line (Tailstock Slightly Higher)	0.0008	0.0008	0.0008	N/A

* For indexing accuracy in inches per arc sec, refer to page 3.

DIAGRAM OF EXTERNAL SIZE (VERTICAL)



GT-320V
(Unit: inch)



GT-470W
(Unit: inch)