



These heavy-duty indexers feature a “non-lifting” tabletop that allows them extra capacity. The interlocking three-piece gear increases repeatability with use and makes them perfect for precision machine tools. Hydraulic power packs are available for operating these indexers. Electrical versions are also available.

Features

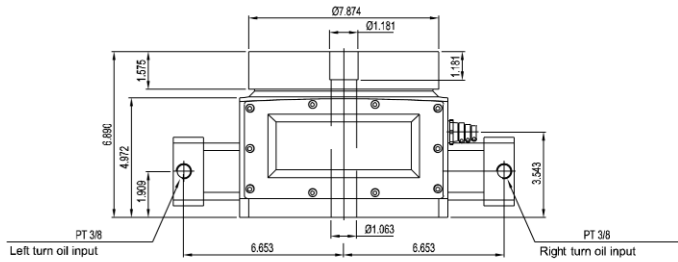
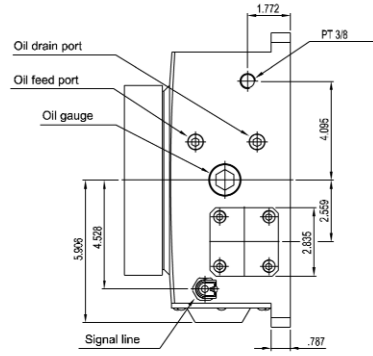
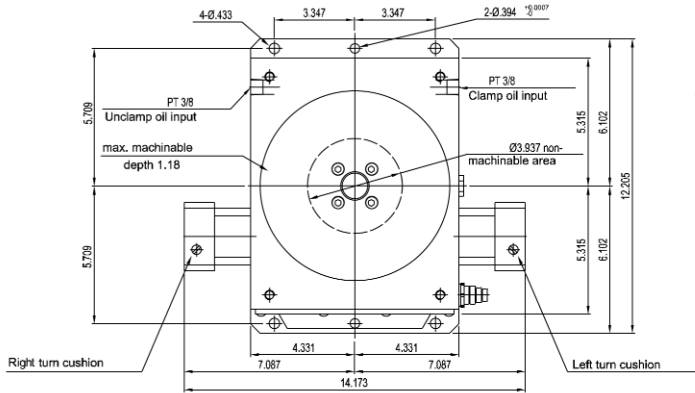
- Hirth Coupled with ± 5 arc sec repeatability
- “Non-lifting” dial plate
- Standard 4, 6, 8, 12 and 24 station indexers
- 2, 3, 5 and other specials available
- Sealed housing keeps coolant out of the oil and away from the switches
- Special dial plates “cast to print” available

Specifications (Unit: inch)

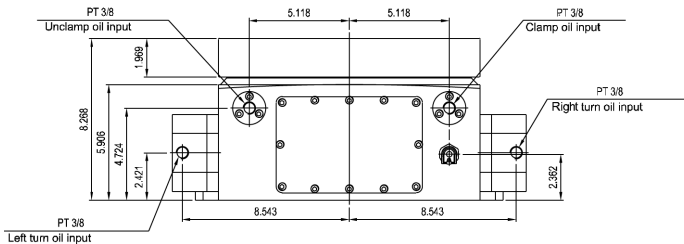
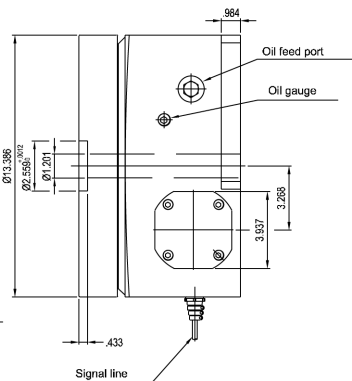
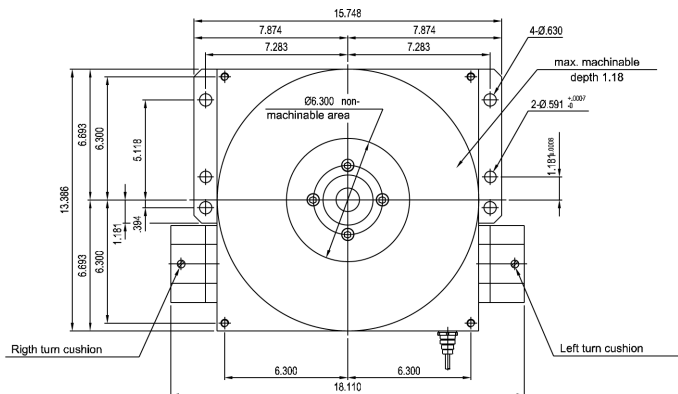
| Model | | CT-200 | CT-340 | CT-470 | CT-600 | CT-800 |
|---|-----------------------|--|--------------------------------------|--------------------------------------|--------------------------------------|--------------------------------------|
| Plate Diameter | (inch) | 7.874 | 13.386 | 18.504 | 23.622 | 31.496 |
| Height | (inch) | 6.693 | 8.268 | 9.449 | 10.236 | 11.811 |
| Center Hole Diameter | (inch) | 1.181 ^{+0.013} ₀ | 2.559 ^{+0.019} ₀ | 3.543 ^{+0.022} ₀ | 4.330 ^{+0.022} ₀ | 4.724 ^{+0.025} ₀ |
| | | Depth 1.181 | Depth 0.433 | Depth 0.433 | Depth 0.433 | Depth 1.575 |
| Index Numbers | (Standard) | 4, 6, 8, 12, 24 (one of them) | | | | |
| | (Special) | 2, 3, 5, etc. available by special order | | | | |
| Index Accuracy* | (arc sec) | ± 5 | ± 5 | ± 5 | ± 5 | ± 5 |
| Table Running Direction | | clockwise and counterclockwise | | | | |
| Rotary Torque | (lb ft) | 159 | 434 | 579 | 723 | 2025 |
| Working Pressure | (psi) | 430 | 430 | 430 | 500 | 500 |
| Clamping Force | (lb) | 2646 | 3439 | 8752 | 17452 | 24912 |
| Permissible Loading | (lb) | 209 | 1102 | 1543 | 2756 | 5291 |
| Permissible Instant Inertia GD ² | (lb ft ²) | 451 | 2017 | 4218 | 11866 | 28477 |
| Weight | (lb) | 117 | 216 | 55 | 1213 | 2205 |

* For indexing accuracy in inches per arc sec, refer to page 3.

DIAGRAM OF EXTERNAL SIZE (HORIZONTAL)



CT-200
(Unit: inch)



CT-340
(Unit: inch)

Inspection Value (Unit: inch)

| Inspection Item | CT-200 | CT-340 | CT-470 | CT-600 | CT-800 |
|--|--------|--------|--------|---------|---------|
| Center Hole Run Out | 0.0008 | 0.0008 | 0.0008 | 0.0008 | 0.0008 |
| Table Surface Straightness | 0.0008 | 0.0008 | 0.0008 | 0.0008 | 0.0008 |
| Table Surface Run Out | 0.0006 | 0.0006 | 0.0008 | 0.0008 | 0.0008 |
| Parallelism Between Plate and Bottom Surface | 0.0008 | 0.0008 | 0.0008 | 0.00118 | 0.00118 |
| Index Accuracy*(arc sec) | ± 5 | ± 5 | ± 5 | ± 5 | ± 5 |

* For indexing accuracy in inches per arc sec, refer to page 3.

